

Care and Maintenance

To clean your filter unit, wipe down the exterior with a damp cloth.

For the AQ-5200 and AQ-5300 only:

Once filters are at 95% capacity (about every 6 months), the battery alarm will sound and flash red when water is flowing and will continue for 15 seconds once water is turned off. Change the battery every time you replace your filters. The battery is included with the filter replacement cartridges.

Pure Satisfaction



All Aquasana products offer a 90-day 100% satisfaction guarantee. (A 1-year warranty is included, which covers defects in materials and workmanship.) If for any reason you are not satisfied with your purchase, simply call us or the dealer you purchased from. A Return Authorization Code and a full refund will be promptly issued upon return. Thank you for choosing Aquasana!

This filter system is designed and tested for use with genuine Aquasana parts, including replacement filters, faucet and all hardware. Use of parts from other manufacturers may result in loss of contaminant reduction performance, system damage or failure. Use of parts from other manufacturers will also void your warranty. Please visit www.aquasana.com for all replacement parts.

For conditions of use, health claims certified by the California Department of Public Health, and replacement parts see product data sheet.

California Department of Public Health Certification Number 13-2173.

AQ-5100

Replacement cartridge:
AQ-5100R

Rated service flow:
0.5 gpm

Max capacity:
200 gal

Min working pressure:
20 psi (1.40 kg/cm²)

Max working pressure:
80 psi (5.62 kg/cm²)

Min operating temperature:
40° F (4.44° C)

Max operating temperature:
90° F (32.22° C)

AQ-5200

Replacement cartridge:
AQ-5200R

Rated service flow:
0.5 gpm

Max capacity:
500 gal

Min working pressure:
20 psi (1.40 kg/cm²)

Max working pressure:
80 psi (5.62 kg/cm²)

Min operating temperature:
40° F (4.44° C)

Max operating temperature:
90° F (32.22° C)

AQ-5300

Replacement cartridge:
AQ-5300R

Rated service flow:
0.5 gpm

Max capacity:
600 gal

Min working pressure:
20 psi (1.40 kg/cm²)

Max working pressure:
80 psi (5.62 kg/cm²)

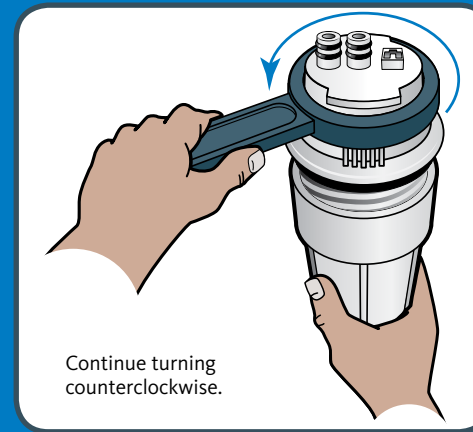
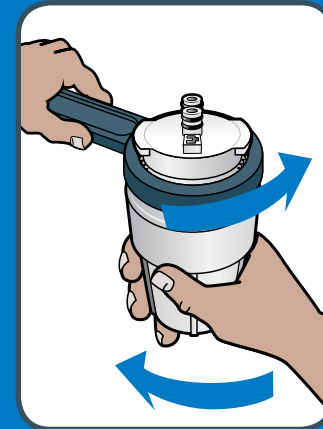
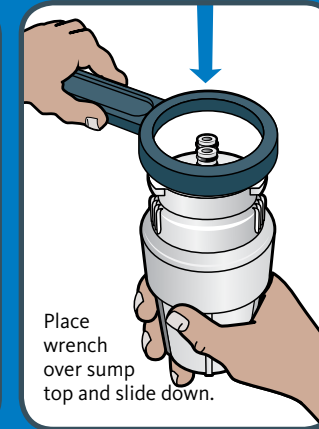
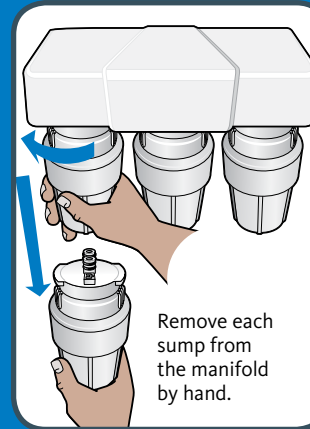
Min operating temperature:
40° F (4.44° C)

Max operating temperature:
90° F (32.22° C)

Do not use with water that is microbiologically unsafe or of unknown water quality without adequate disinfection before or after the system. Systems certified for cyst reduction may be used on disinfected waters that may contain filterable cysts.

Precautions:

- Filter is only to be used with cold water.
- If you experience a leak at the hose connection, disconnect and re-seat the hose.
- Installation must comply with local laws.
- Aquasana is not liable for consequential or incidental damages due to improper installation.



WARNING

Do not use tools to remove or tighten sumps. Over tightening can cause damage and result in leaking. Hand tighten only.

